

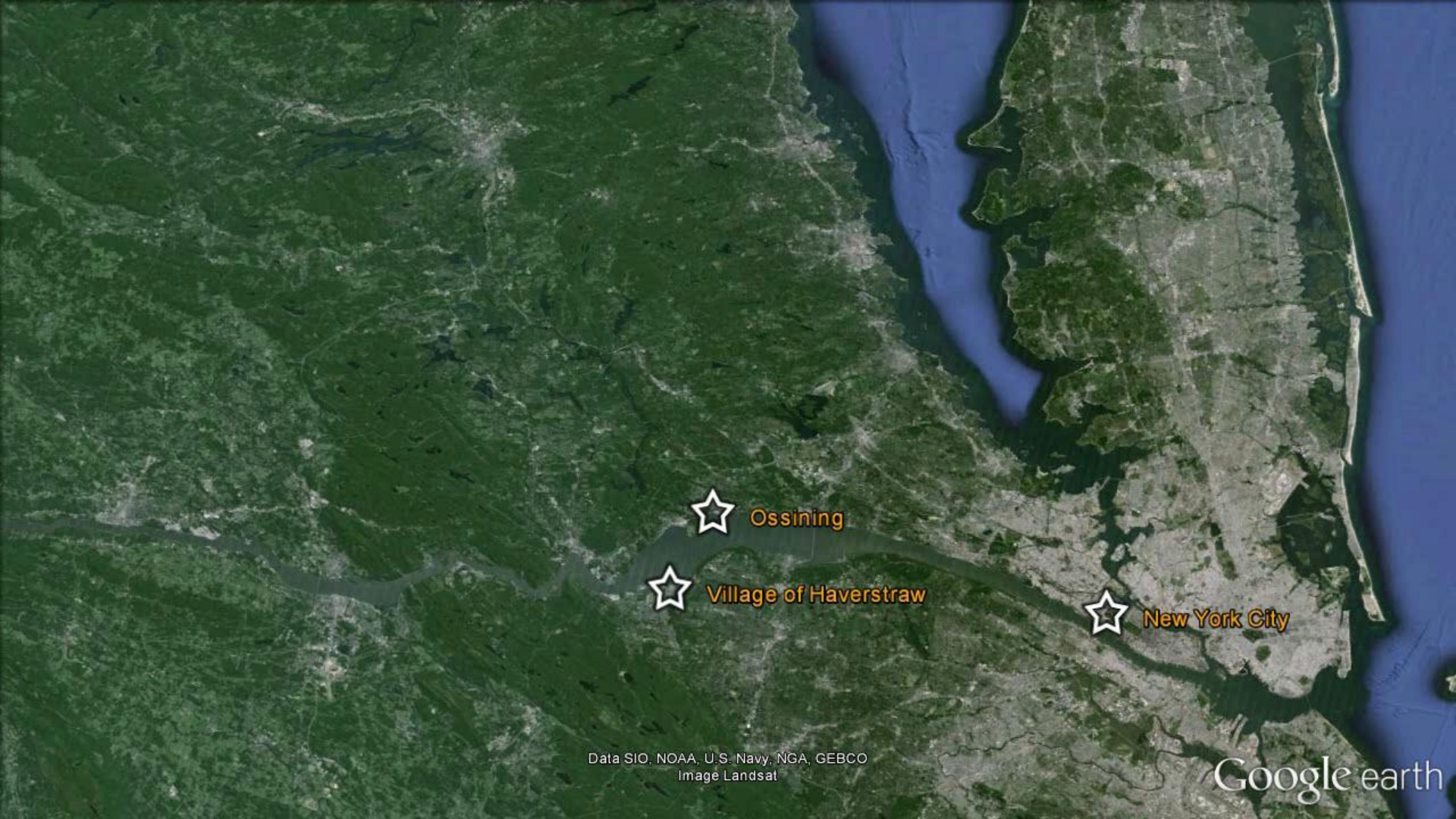
# The Village of Haverstraw

## Report Highlights June 2016

HUDSON VALLEY **PATTERN** *for* **PROGRESS**



The views reflected in this body of work are not necessarily those of Hudson Valley Pattern for Progress. This body of work has been produced by participants in the Pattern Fellows Program, a part-time education and learning experience available to mid-career professionals from governments, agencies, organizations and corporations within the region. This body of work is solely the research product of those who participate as students within the Fellows program and not of the research and policy staff at Pattern for Progress.

A satellite view of the New York City metropolitan area and surrounding regions. The Hudson River is visible on the left, flowing into the city. The city itself is a dense urban area on the right. Three white star markers with orange outlines are placed on the map. The top star is labeled 'Ossining', the middle star is labeled 'Village of Haverstraw', and the bottom star is labeled 'New York City'. The background shows a mix of green forested areas and grey urban development.

Ossining

Village of Haverstraw

New York City



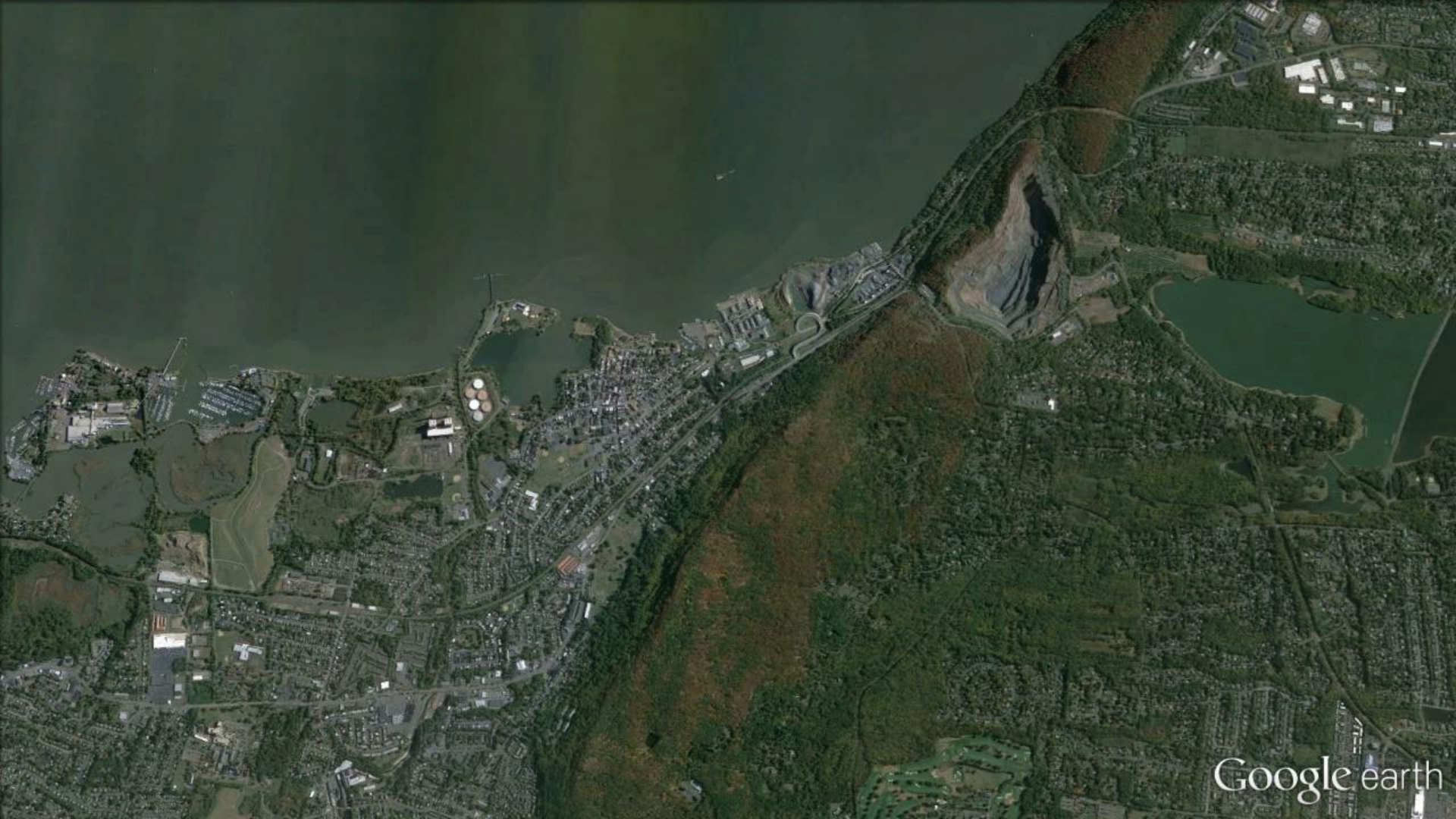




Image Landsat  
Data SIO, NOAA, U.S. Navy, NGA, GEBCO

Google earth

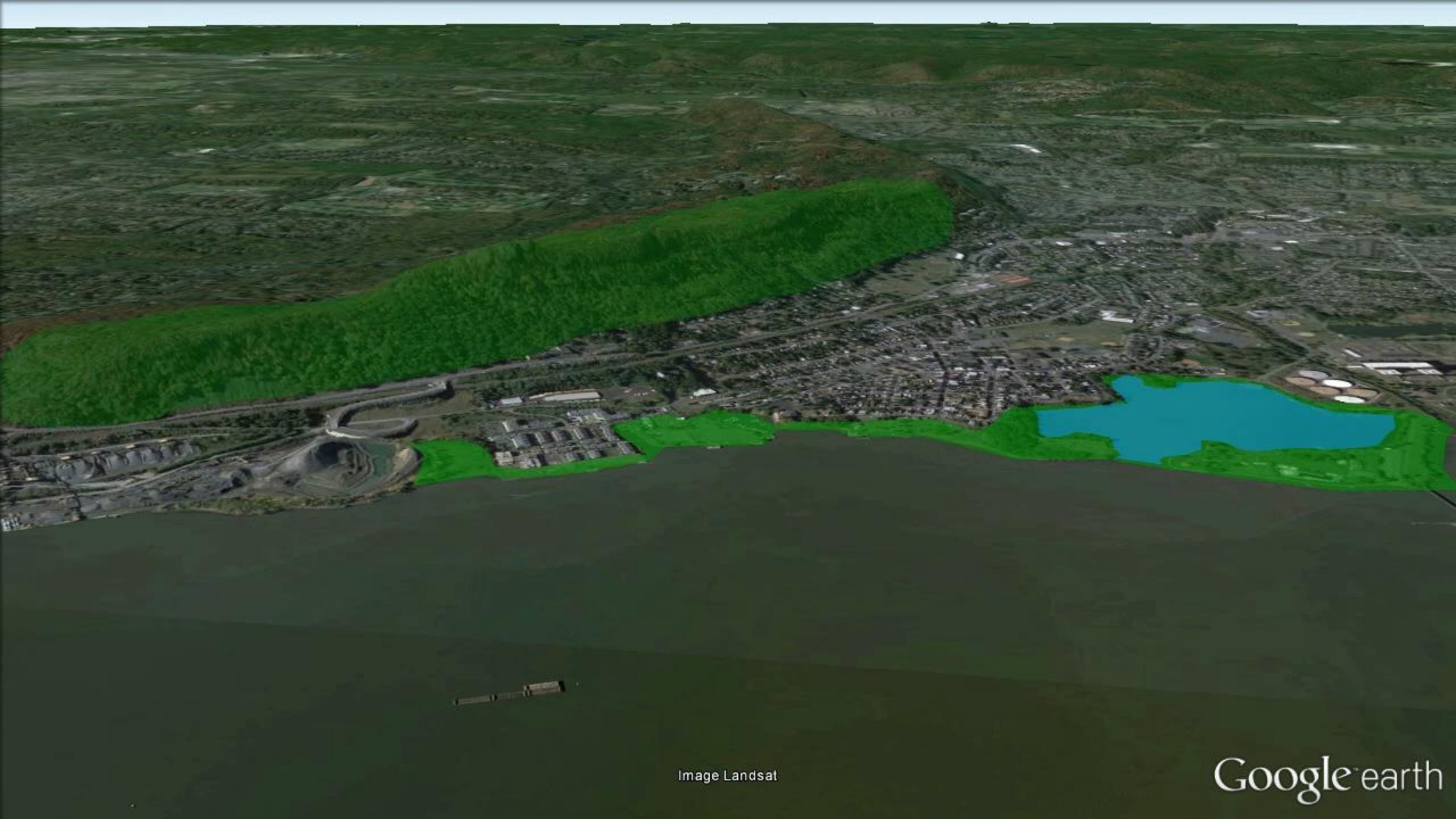


Image Landsat

Google earth



Image Landsat

Google earth



Image Landsat

Google earth

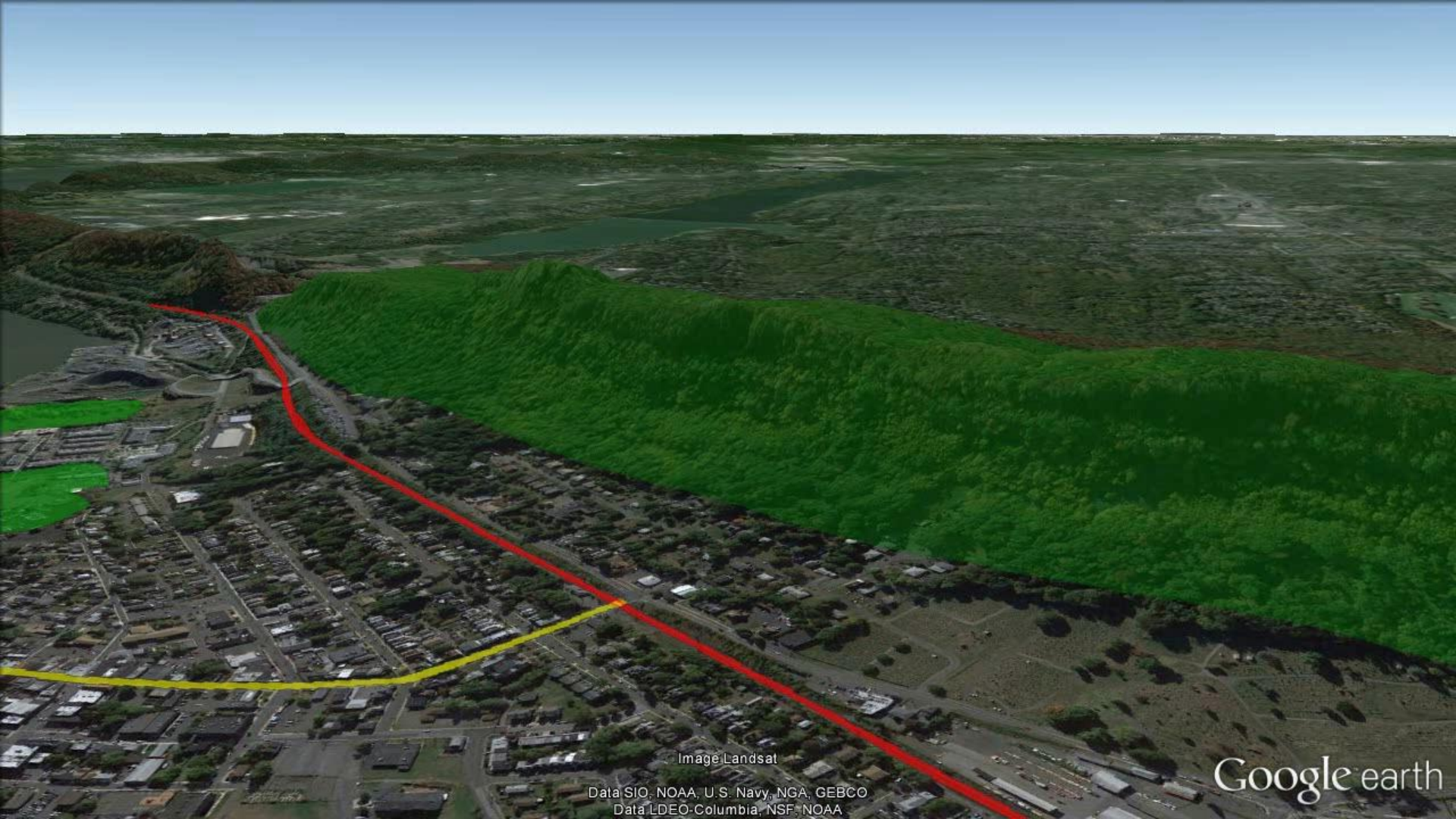


Image Landsat

Data SIO, NOAA, U.S. Navy, NGA, GEBCO  
Data LDEO-Columbia, NSF, NOAA

Google earth



Image Landsat

Data SIO, NOAA, U.S. Navy, NGA, GEBCO  
Data LDEO-Columbia, NSF, NOAA

Google earth

# The Village

12,000 Population  
67% Hispanic

Residents' Access to  
Open Space

86% live within ½ mile of a park

## Housing

5,580 Buildings

41% Built before 1940

48% Owner occupied

45% Renter

8% Vacant

# Main St. Assets



Walkability Nature Affordable



Architectural heritage



Direct access to the Hudson River



Rich history,  
including American  
Revolution and  
Industrial Revolution

The views reflected in this body of work are not necessarily those of Hudson Valley Pattern for Progress. This body of work has been produced by participants in the Pattern Fellows Program, a part-time education and learning experience available to mid-career professionals from governments, agencies, organizations and corporations within the region. This body of work is solely the research product of those who participate as students within the Fellows program and not of the research and policy staff at Pattern for Progress.

# Challenges

Community cohesion

Perceived safety concerns

Lack public access  
amenities along the river

Aging infrastructure and  
active code enforcement



# Case Studies

Peekskill  
Beacon  
Yonkers

Waterfront towns  
Main Street draw  
Incorporate the arts

# Peekskill



Cultural Diversity and Mix of Businesses

Riverfront park & MTA station  
Main Street appeal  
Event anchor institution



Anchor – Historic Paramount Theater



Impressive Streetscape, Art and Gathering Places

# Beacon



Cohesive Main Street



Multiple Cultural and Business Anchors



Frequent Arts and Community Events

Visionary leadership  
Strong code enforcement  
Active community participation

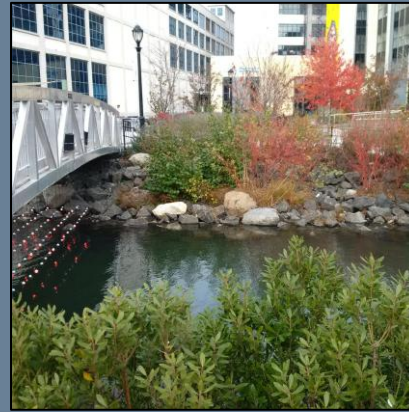
The views reflected in this body of work are not necessarily those of Hudson Valley Pattern for Progress. This body of work has been produced by participants in the Pattern Fellows Program, a part-time education and learning experience available to mid-career professionals from governments, agencies, organizations and corporations within the region. This body of work is solely the research product of those who participate as students within the Fellows program and not of the research and policy staff at Pattern for Progress.

# Yonkers



Waterfront Restaurant Anchor

Waterfront revitalization  
Unearthing natural assets  
Savvy marketing



Day-lighting Saw Mill River



Attractive Architecture and Streetscape

The views reflected in this body of work are not necessarily those of Hudson Valley Pattern for Progress. This body of work has been produced by participants in the Pattern Fellows Program, a part-time education and learning experience available to mid-career professionals from governments, agencies, organizations and corporations within the region. This body of work is solely the research product of those who participate as students within the Fellows program and not of the research and policy staff at Pattern for Progress.



Image Landsat  
Data SIO, NOAA, U.S. Navy, NGA, GEBCO

Data LDEO-Columbia, NSF, NOAA

Google earth



# Haverstraw

Historic riverfront village on the rise through collaborative efforts of residents, community groups, organizations, businesses and public agencies.

# Recommendations

## Comprehensive Plan

- Communication and collaboration
- Form based zoning code
- Parking strategies
- Street aesthetics
- Open space
- Affordable housing

## Code Enforcement

# Recommendations

continued

- Update infrastructure
- Address safety concerns
- Explore financing options
- Revitalize waterfront
- Cleanliness campaign
- Marketing plan
- Focused tourist events
- Ferry on the weekends

# The Village of Haverstraw

## HVPP Fellows Program Research Team

Mary Lou Carolan  
Tony Cerreto  
Clareann Grimaldi  
William Long  
Jeff McHugh  
Lucy Redzeposki  
Diane Rowe

The views reflected in this body of work are not necessarily those of Hudson Valley Pattern for Progress. This body of work has been produced by participants in the Pattern Fellows Program, a part-time education and learning experience available to mid-career professionals from governments, agencies, organizations and corporations within the region. This body of work is solely the research product of those who participate as students within the Fellows program and not of the research and policy staff at Pattern for Progress.