

A Plan for Progress: Developing Community and Improving Health in Port Jervis

Pattern for Progress Fellows Program, 2018-2019

Inaudy Esposito, Orange County Human Rights Commission

Andrew Oni, Greater Hudson Valley Health Network

Jason Rashford, Bon Secours Community Hospital

Amy Minutolo, Walden Savings Bank

Maire Ullrich, Cornell Cooperative Extension of Orange County

Julie Stainton, Habitat for Humanity of Greater Newburgh

Shannon Cilento, Sullivan County Division of Planning



“Anchor institutions are place-based entities such as universities and hospitals that are tied to their surroundings by mission, invested capital, or relationships to customers, employees, and vendors. These local human and economic relationships link institution well-being to that of the community in which it is anchored.” –*The Anchor Dashboard, 2013*

The Plan for Port

- I. Community Overview
- II. Definition of Need
- III. Research Methodology
- IV. Research Findings
- V. Pilot Program
- VI. Anticipated Program Outcomes

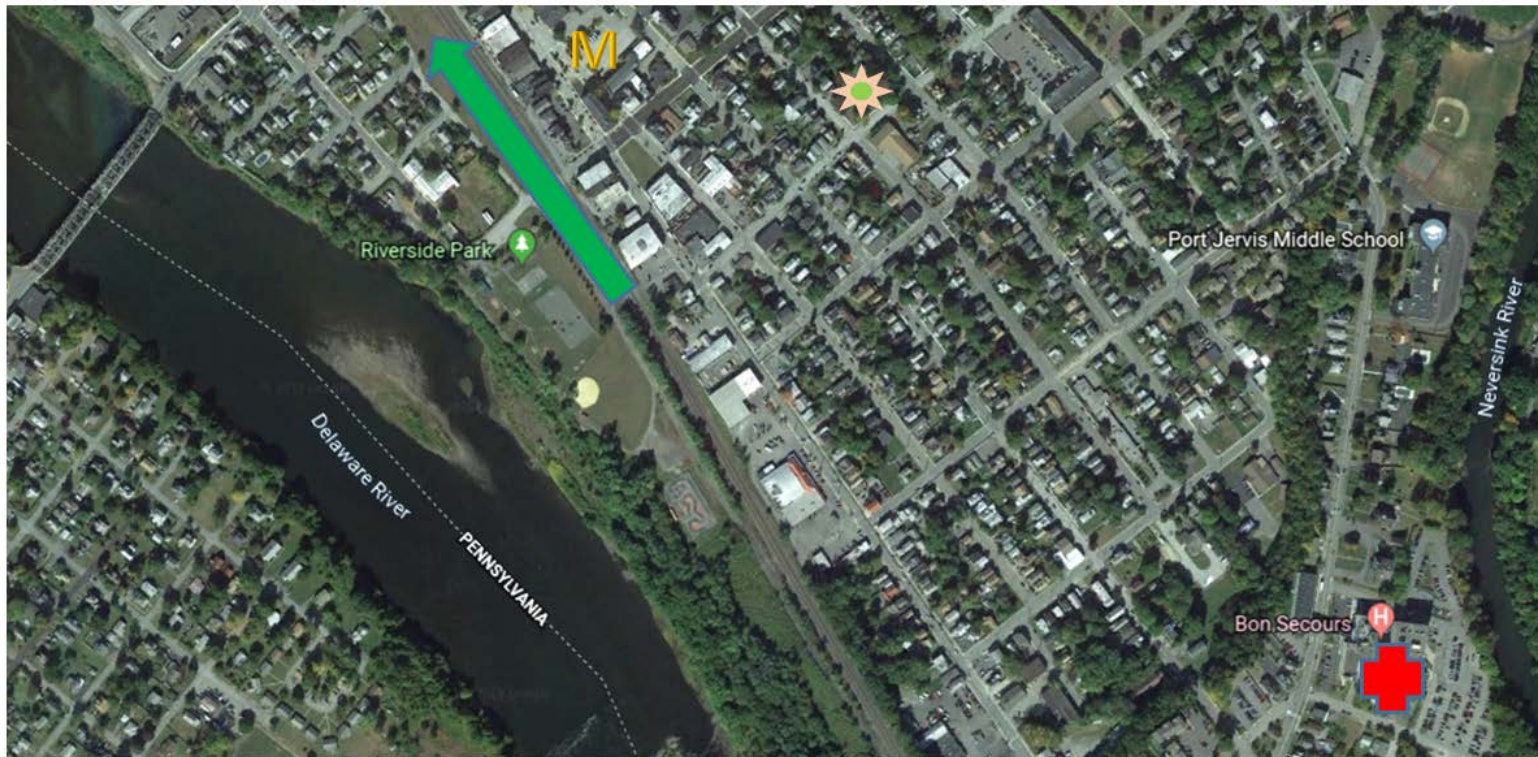


An Era of Reinvestment

- \$40M WMCHealth/Bon Secours Charity Health System Medical Village Project
- The Neversink Bridge Replacement Project: \$19.7M “Gateway” initiative
- Pike Plaza Project: \$1M project completed which adds a Supermarket, Retail Stores
- \$1.9M Watershed Protection Initiative
- Municipal Solar Panel and Forestry Management Project
- Recent sale of key downtown property for hotel development, project approved by City
- Annexation of adjacent land from the Town of Deerpark for additional development
- Opening of the SUNY Orange Sarfatti Education Center
- Downtown Promenade and Pedestrian Mall
- Creation of Point Peter Hiking and Biking Trail
- Downtown Municipal Parking Lot Paved and Expanded
- Port Jervis Downtown Walking Loop completed and Complete Streets Initiative adopted



Project Location

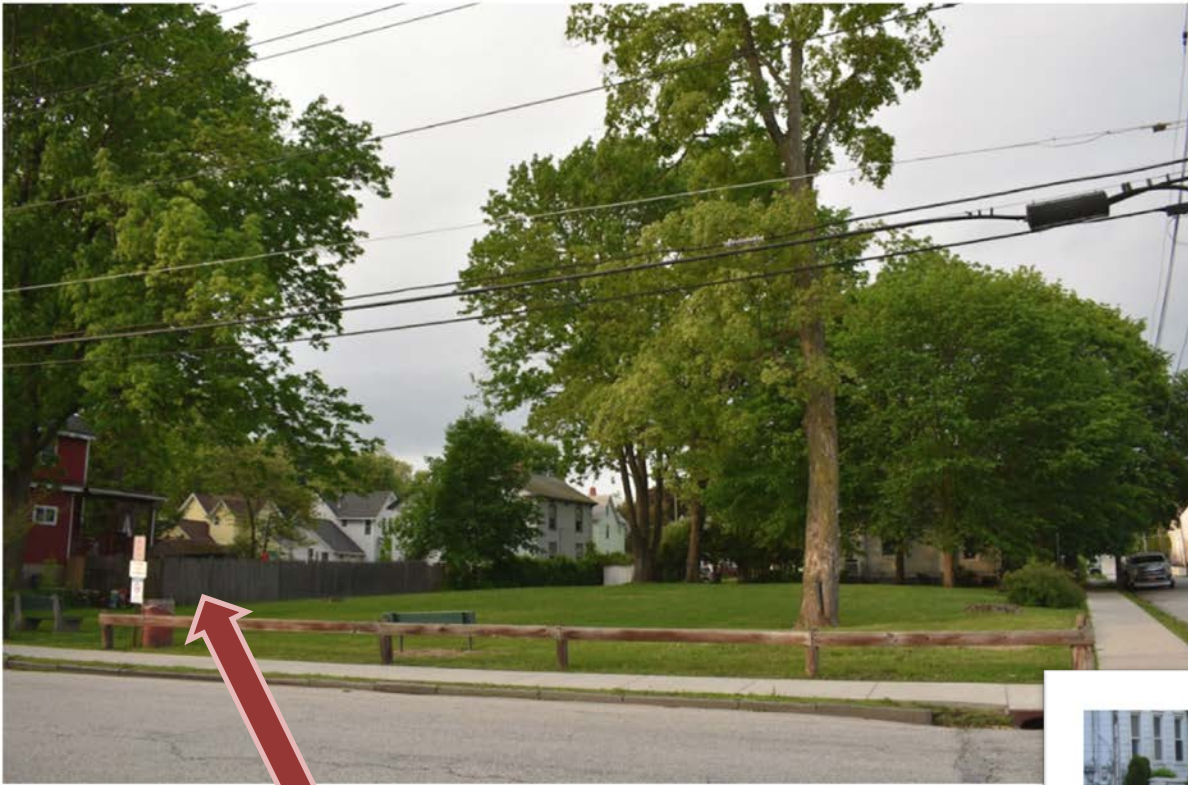


Corner of Hammond & Church Streets.



HUDSON VALLEY
PATTERN *for* PROGRESS





Potential Funding Partners

- Community Service Orgs. (Kiwanis, Lions, Rotary)
- OC DOH – Healthy Orange Grants

New fencing could be advertisement space for funding partners or WMC Health. Bench backs could display signage for parent/child health issues (pre-natal, vaccination programs etc.). Lots of opportunity for educational space in the play space.

